

# Your Key to Vascular Access



Product Catalogue

 **GAMBRO®**



# Vascular Access

## Product Overview

### Short-Term Catheters

04-15

- |          |  |
|----------|--|
| Standard | <ul style="list-style-type: none"><li>• Single / Double / Triple Lumen</li><li>• Paediatric Single / Double Lumen</li></ul>                                      |
| HighFlow | <ul style="list-style-type: none"><li>• Double Lumen</li><li>• Double Lumen with Dolphin® Coating</li><li>• Double Lumen with Dolphin® Protect Coating</li></ul> |

### Long-Term Catheters

16-21

- |             |  |
|-------------|--|
| Retrograde  | <ul style="list-style-type: none"><li>• EverFlow® Single Lumen</li><li>• Pourchez RetrO™</li></ul> |
| Anterograde | <ul style="list-style-type: none"><li>• EverFlow® Double Lumen</li></ul>                           |

### Fistula Needles

22-33

- |                  |  |
|------------------|--|
| Standard Needles | <ul style="list-style-type: none"><li>• Plume S</li></ul>                      |
| Safety Needles   | <ul style="list-style-type: none"><li>• Plume SP</li><li>• Plume SP+</li></ul> |
| Standard Needles | <ul style="list-style-type: none"><li>• Nipro Fistula Needles</li></ul>        |

### Plasters

34-37

- TipStop Plaster
- Gambro Plaster XL

### Accessories

38-39

- Vessel Dilator
- Introducer Needle
- Calibrated Guidewire
- Luer-Lock Injection Cap
- Luer-Lock Protection Cap

# GamCath® Short-Term Catheters

## General Features & Benefits

- ⊕ Split-free bifurcation reduces clotting.
- ⊕ Thermosensitive polyurethane assures rigidity during insertion and patient comfort.
- ⊕ Transparent luer-lock connectors are resistant against deformation and cracking.





# Standard

## Single Lumen

### Ordering Information

#### Single Lumen Catheters

Product Name	Product Code	OD (F)	Length (mm)	Material	Details	Units per box
GSC-815J	100873	8	150	PUR	curved	10
GSC-815	113197	8	150	PUR	-	10
GSC-820	113196	8	200	PUR	-	10
GSC-825	101805	8	250	PUR	-	10

#### Single Lumen Catheter Kits

Product Name	Product Code	OD (F)	Length (mm)	Material	Details	Units per box
GSK-815	113195	8	150	PUR	-	5
GSK-817,5	113194	8	175	PUR	-	5
GSK-820	113193	8	200	PUR	-	5
GSK-825	100825	8	250	PUR	-	5
GSK-812,5J	101110	8	125	PUR	curved	5
GSK-815J	101806	8	150	PUR	curved	5
GSK-820J	100824	8	200	PUR	curved	5
GSK-815Y	113192	8	150	PUR	Y-adapter	5
GSK-820Y	113191	8	200	PUR	Y-adapter	5

Kit contains: catheter, introducer needle GPN-177, calibrated guidewire GGW-3870J, luer-lock injection cap GIC-100, wound dressing<sup>°</sup>

#### Hemofiltration Catheter Kit

Product Name	Product Code	OD (F)	Length (mm)	Material	Details	Units per box
GHK-1011	100806	10	110	PUR	-	5

Kit contains: catheter, introducer needle GPN-177, calibrated guidewire GGW-3870J, luer-lock injection cap GIC-100, wound dressing<sup>°</sup>, 1 venous and 1 arterial marker clamp<sup>°</sup>

<sup>°</sup> Not available as GamCath® Accessory.

# GamCath® Short-Term Catheters

## General Features & Benefits

- ⊕ Split-free bifurcation reduces clotting.
- ⊕ Thermosensitive polyurethane assures rigidity during insertion and patient comfort.
- ⊕ Transparent luer-lock connectors are resistant against deformation and cracking.

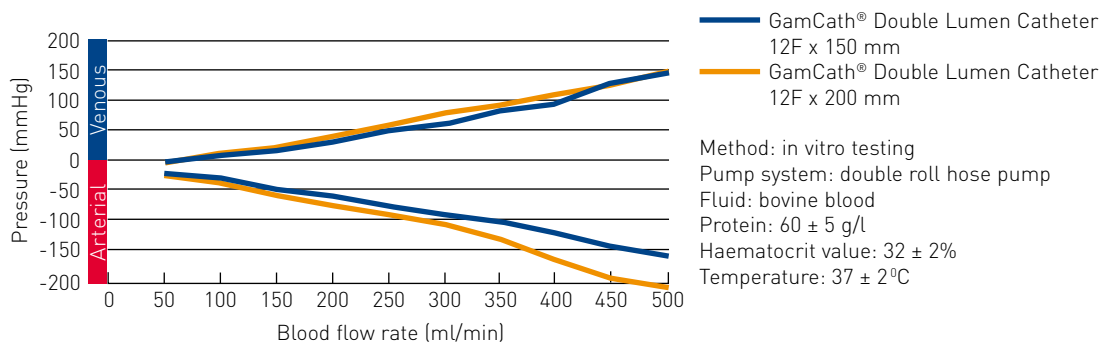




# Standard

## Double Lumen

### Blood Flow Rate



### Ordering Information

#### Double Lumen Catheters

Product Name	Product Code	OD (F)	Length (mm)	Material	Details	Units per box
GDC-1115	101797	11	150	PUR	-	5
GDC-1117,5	101242	11	175	PUR	-	5
GDC-1120	101799	11	200	PUR	-	5
GDC-1125	101800	11	250	PUR	-	5
GDC-1112,5J	101028	11	125	PUR	curved	5
GDC-1115J	101798	11	150	PUR	curved	5
GDC-1120J	101295	11	200	PUR	curved	5

Unit contains: vessel dilator GVD-1115

#### Double Lumen Catheter Kits

Product Name	Product Code	OD (F)	Length (mm)	Material	Details	Units per box
GDK-1115	101801	11	150	PUR	-	5
GDK-1117,5	103241	11	175	PUR	-	5
GDK-1120	101802	11	200	PUR	-	5
GDK-1125	101511	11	250	PUR	-	5
GDK-1112,5J	101169	11	125	PUR	curved	5
GDK-1115J	101509	11	150	PUR	curved	5
GDK-1117,5J	101379	11	175	PUR	curved	5
GDK-1120J	101510	11	200	PUR	curved	5
GDK-1215	100842	12	150	PUR	-	5
GDK-1220	101803	12	200	PUR	-	5

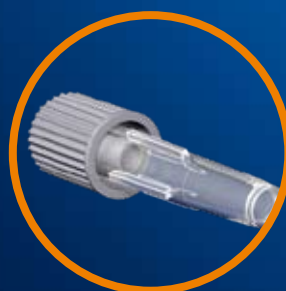
Kit contains: catheter, introducer needle GPN-177, calibrated guidewire GGW-3870J, 2 x luer-lock injection cap GIC-100, vessel dilator GVD-1115 for 11F, vessel dilator 12F x 150 mm for 12F<sup>◊</sup>, wound dressing<sup>◊</sup>

<sup>◊</sup> Not available as GamCath® Accessory.

# GamCath® Short-Term Catheters

## General Features & Benefits

- ⊕ Split-free bifurcation reduces clotting.
- ⊕ Thermosensitive polyurethane assures rigidity during insertion and patient comfort.
- ⊕ Transparent luer-lock connectors are resistant against deformation and cracking.





# Standard

## Triple Lumen

### Ordering Information

#### Triple Lumen Catheter Kits

Product Name	Product Code	OD (F)	Length (mm)	Material	Details	Units per box
GTK-1215	101808	12	150	PUR	-	5
GTK-1217,5	103482	12	175	PUR	-	5
GTK-1220	101809	12	200	PUR	-	5
GTK-1215J	101384	12	150	PUR	curved	5
GTK-1220J	101385	12	200	PUR	curved	5

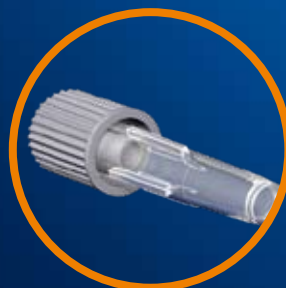
Kit contains: catheter, introducer needle GPN-177, calibrated guidewire GGW-3870J, 3 x luer-lock injection cap GIC-100, vessel dilator 12F x 150 mm<sup>◊</sup>, wound dressing<sup>◊</sup>

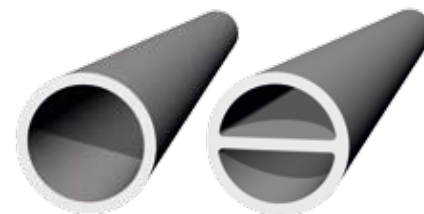
<sup>◊</sup> Not available as GamCath<sup>®</sup> Accessory.

# GamCath® Short-Term Catheters

## General Features & Benefits

- ⊕ Split-free bifurcation reduces clotting.
- ⊕ Thermosensitive polyurethane assures rigidity during insertion and patient comfort.
- ⊕ Transparent luer-lock connectors are resistant against deformation and cracking.

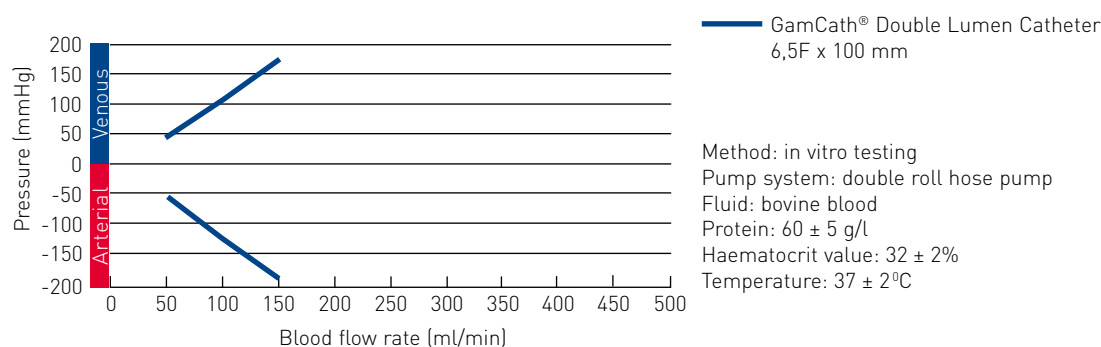




# Standard

## Paediatric Single / Double Lumen

### Blood Flow Rate



### Ordering Information

#### Single Lumen Catheter Kit

Product Name	Product Code	OD (F)	Length (mm)	Material	Units per box
GSK-606P	110644	6	60	PUR	5

Kit contains: catheter, introducer needle GPN-187, calibrated guidewire GGW-3250J, luer-lock injection cap GIC-100, vessel dilator 6F x 150 mm<sup>◊</sup>, wound dressing<sup>◊</sup>

#### Double Lumen Catheter Kits

Product Name	Product Code	OD (F)	Length (mm)	Material	Units per box
GDK-607,5P	101208	6,5	75	PUR	5
GDK-610P	100943	6,5	100	PUR	5
GDK-612,5P	100843	6,5	125	PUR	5
GDK-810P	101512	8	100	PUR	5
GDK-812,5P	101513	8	125	PUR	5
GDK-815P	100944	8	150	PUR	5

Kit contains: catheter, introducer needle GPN-187, calibrated guidewire GGW-3250J for 6,5F / GGW-3570J for 8F, 2 x luer-lock injection cap GIC-100, vessel dilator 7F x 150 mm for 6,5F<sup>◊</sup> / vessel dilator GVD-815 for 8F, wound dressing<sup>◊</sup>

<sup>◊</sup> Not available as GamCath® Accessory.

# GamCath® Short-Term Catheters

## Additional Features & Benefits

In addition to the general Features & Benefits of the GamCath series, the HighFlow series offers:

- ⊕ Flow-optimized lumen design permits best flow rates at low arterial pressure.
- ⊕ Catheter tip design without side holes reduces clotting risk and prevents catheter suctioning to the vessel intima.

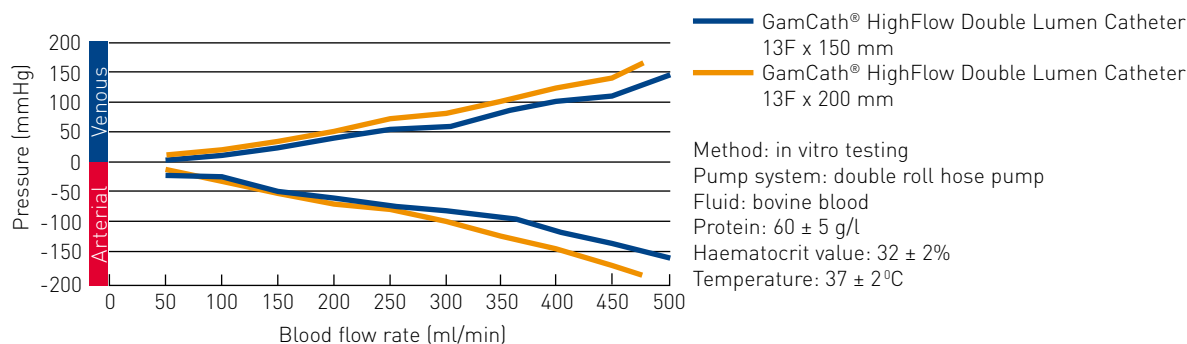




# HighFlow

## Double Lumen

### Blood Flow Rate



### Ordering Information

#### HighFlow Double Lumen Catheter Kits

Product Name	Product Code	OD (F)	Length (mm)	Material	Details	Units per box
GDHK-1115	109711	11,5	150	PUR	-	5
GDHK-1120	109712	11,5	200	PUR	-	5
GDHK-1125	109713	11,5	250	PUR	-	5
GDHK-1115J	112572	11,5	150	PUR	curved	5
GDHK-1120J	112573	11,5	200	PUR	curved	5
GDHK-1315	103358	13	150	PUR	-	5
GDHK-1317,5	103357	13	175	PUR	-	5
GDHK-1320	103356	13	200	PUR	-	5
GDHK-1325	106661	13	250	PUR	-	5
GDHK-1315J	109535	13	150	PUR	curved	5
GDHK-1320J	109511	13	200	PUR	curved	5

Kit contains: catheter with inner dilator, introducer needle GPN-177, calibrated guidewire GGW-3270J for 11F / GGW-3870J for 13F, 2 x luer-lock injection cap GIC-100, vessel dilator 12F x 150 mm for 11F<sup>°</sup> / vessel dilator 13F x 150 mm for 13F<sup>°</sup>, wound dressing<sup>°</sup>

<sup>°</sup> Not available as GamCath<sup>®</sup> Accessory.

# GamCath® Short-Term Catheters

## Additional Features & Benefits

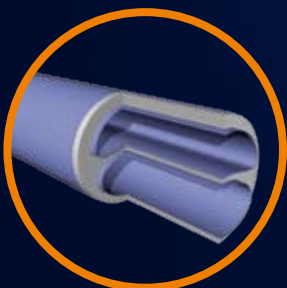
In addition to the general Features & Benefits of the GamCath and HighFlow series, the Dolphin and Dolphin Protect series offers:

### ⊕ **Dolphin Coating**

The natural microdomain surface minimizes interaction between plasma proteins and cells, deposits are reduced and bacterial inhibition is decreased.

### ⊕ **Dolphin Protect Coating**

The smooth surface and the Bi\*-Additive reduce bacterial inhibition, thus Dolphin Protect is the first mode of action which ensures active antibacterial protection without releasing substances (e.g. antibiotics).

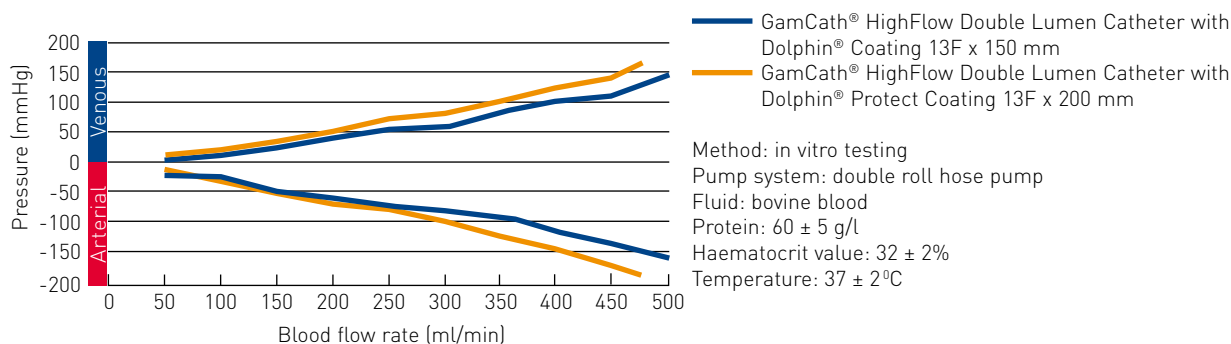




# HighFlow

## Double Lumen with Dolphin® / Dolphin® Protect Coating

### Blood Flow Rate



### Ordering Information

#### HighFlow Double Lumen Catheter Kits with Dolphin Coating

Product Name	Product Code	OD (F)	Length (mm)	Material	Details	Units per box
MS-GDHK-1315	103520	13	150	PUR-PDMS Copolymerfilm	-	5
MS-GDHK-1317,5	103521	13	175	PUR-PDMS Copolymerfilm	-	5
MS-GDHK-1320	103522	13	200	PUR-PDMS Copolymerfilm	-	5
MS-GDHK-1325	106662	13	250	PUR-PDMS Copolymerfilm	-	5

Kit contains: catheter with inner dilator, introducer needle GPN-177, calibrated guidewire GGW-3870J, 2 x luer-lock injection cap GIC-100, vessel dilator 13F x 150 mm<sup>◊</sup>, wound dressing<sup>◊</sup>

#### HighFlow Double Lumen Catheter Kits with Dolphin Protect Coating

Product Name	Product Code	OD (F)	Length (mm)	Material	Details	Units per box
MC-GDHK-1115	109708	11,5	150	PUR-PDMS-PCL/Bi Copolymerfilm	-	5
MC-GDHK-1120	109709	11,5	200	PUR-PDMS-PCL/Bi Copolymerfilm	-	5
MC-GDHK-1125	109710	11,5	250	PUR-PDMS-PCL/Bi Copolymerfilm	-	5
MC-GDHK-1115J	109683	11,5	150	PUR-PDMS-PCL/Bi Copolymerfilm	curved	5
MC-GDHK-1120J	109682	11,5	200	PUR-PDMS-PCL/Bi Copolymerfilm	curved	5
MC-GDHK-1315	109585	13	150	PUR-PDMS-PCL/Bi Copolymerfilm	-	5
MC-GDHK-1320	109584	13	200	PUR-PDMS-PCL/Bi Copolymerfilm	-	5
MC-GDHK-1325	109705	13	250	PUR-PDMS-PCL/Bi Copolymerfilm	-	5
MC-GDHK-1315J	109706	13	150	PUR-PDMS-PCL/Bi Copolymerfilm	curved	5
MC-GDHK-1320J	109707	13	200	PUR-PDMS-PCL/Bi Copolymerfilm	curved	5

Kit contains: catheter with inner dilator, introducer needle GPN-177, calibrated guidewire GGW-3270J for 11F / GGW-3870J for 13F, 2 x luer-lock injection cap GIC-100, vessel dilator 12F x 150 mm for 11F<sup>◊</sup> / vessel dilator 13F x 150 mm for 13F<sup>◊</sup>, wound dressing<sup>◊</sup>

<sup>◊</sup> Not available as GamCath® Accessory.

# GamCath® Long-Term Catheters

## Features & Benefits

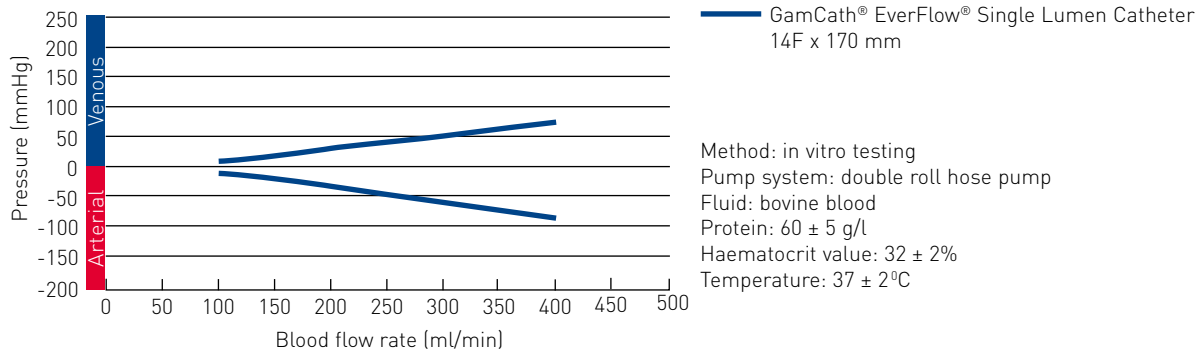
- ⊕ Catheter tip design without side holes reduces clotting risk and prevents catheter suctioning to the vessel intima.
- ⊕ Advanced silicone improves the adaption to the vessel and minimizes vessel trauma.
- ⊕ Implantable cuff provides infection barrier and secures internal catheter anchorage.





# Retrograde EverFlow® Single Lumen

## Blood Flow Rate



## Ordering Information

### EverFlow Single Lumen Catheters

Product Name	Product Code	OD (F)	Implant Length (mm)	Body Length (mm)	Material	Units per box
GSSC-1417	109974	14,4	170	220	Silicone	5
GSSC-1426	109973	14,4	260	300	Silicone	5

Unit contains: catheter, luer-lock injection cap GIC-100, suture ring<sup>◊</sup>, volume calculator<sup>◊</sup>

### EverFlow Single Lumen Catheter Kits

Product Name	Product Code	OD (F)	Implant Length (mm)	Body Length (mm)	Material	Units per box
GSSK-1417	109972	14,4	170	220	Silicone	5
GSSK-1426	109971	14,4	260	300	Silicone	5

Kit contains: catheter, introducer needle GPN-177, calibrated guidewire GGW-3870J, luer-lock injection cap GIC-100, 2 x replacement connector<sup>◊</sup>, suture ring<sup>◊</sup>, tunnelling trocar<sup>◊</sup>, vessel dilator 13F x 150mm<sup>◊</sup>, split sheath dilator system 16F x 150mm<sup>◊</sup>, wound dressing<sup>◊</sup>, volume calculator<sup>◊</sup>

<sup>◊</sup> Not available as GamCath® Accessory.

# Spire Long-Term Catheters

## Features & Benefits

- ⊕ Kink resistant design increases placement flexibility and minimizes complications.
- ⊕ Hubless design without extra-added tips.
- ⊕ Split-tip design and circumferential side holes increase the margin of functionality.
- ⊕ Long proximal pigtails allow customized length.

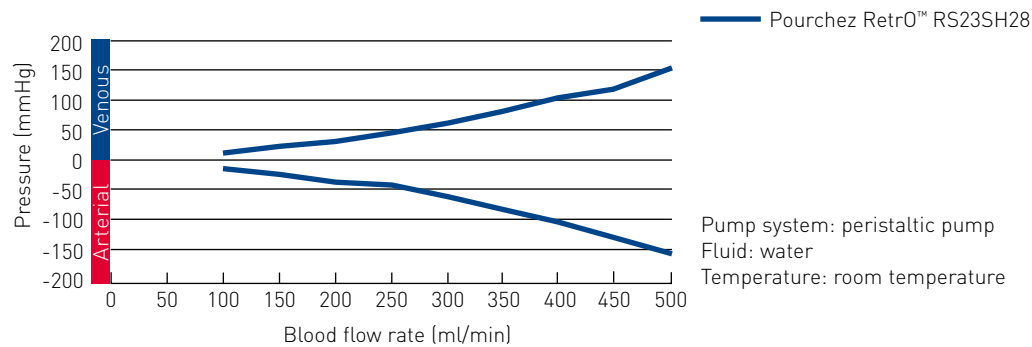




# Retrograde

## Pourchez RetrO™

### Blood Flow Rate



### Ordering Information

#### Pourchez RetrO Combo Kits

Product Name	Product Code	OD (F)	Implant Length (mm)	Body Length (mm)	Material	Units per box
RS19SH24	109735	10 x 20	190	240	Silicone	5
RS23SH28	109744	10 x 20	230	280	Silicone	5
RS27SH32	109743	10 x 20	270	320	Silicone	5
RS31SH36	109742	10 x 20	310	360	Silicone	5
RS35SH40	109741	10 x 20	350	400	Silicone	5

**Kit contains:** Pourchez RetrO catheter, 18G introducer needle, 12 ml syringe, 2 x J / straight 0,038" guidewire, 12F dilator, 14F dilator, 16F dilator, 6F sheath / dilator, 2 x 5F SafeTrac intracatheter dilator, scalpel #11, tunnelling rod, tunnelling sheath, 2 x injection adapter / tunneller, suture ring, 4 x gauze sponge, wound dressing, 2 x injection sealing cap (latex free), 2 x colour-coded extension adapter, 4 x flat clamp and warning label (latex free)

#### Pourchez RetrO Repair Kit

Product Name	Product Code	Units per box
PRRK5	107038	5

**Kit contains:** 2 x colour-coded extension adapter, 2 x flat clamp, 2 x injection sealing cap (latex free)



# GamCath® Long-Term Catheters

## Features & Benefits

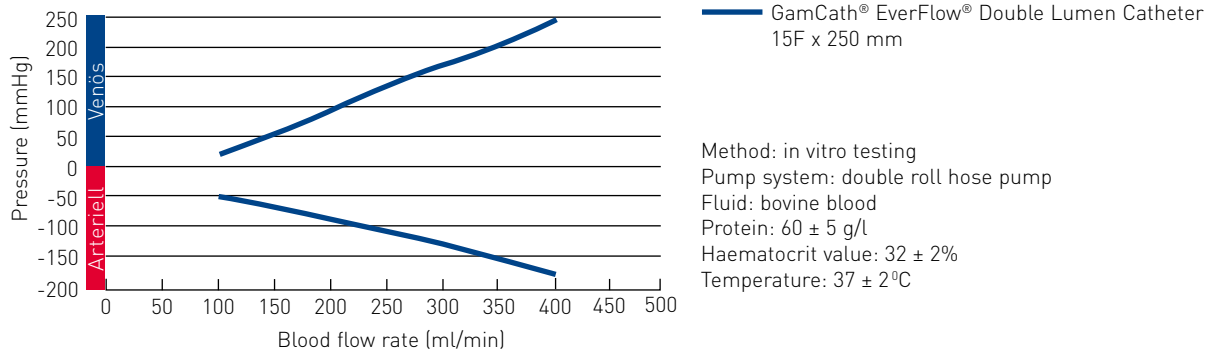
- ⊕ Flow-optimized lumen design permits best flow rates at low arterial pressure.
- ⊕ Catheter tip design without side holes reduces clotting risk and prevents catheter suctioning to the vessel intima.
- ⊕ Advanced silicone improves the adaption to the vessel and minimizes vessel trauma.
- ⊕ Implantable cuff provides infection barrier and secures internal catheter anchorage.





# Anterograde EverFlow® Double Lumen

## Blood Flow Rate



## Ordering Information

### EverFlow Double Lumen Catheter Kits

Product Name	Product Code	OD (F)	Implant Length (mm)	Body Length (mm)	Material	Units per box
GDSK-1517	109324	15	170	240	Silicone	5
GDSK-1521	109323	15	210	280	Silicone	5
GDSK-1525	109327	15	250	320	Silicone	5
GDSK-1529	109326	15	290	360	Silicone	5

Kit contains: catheter, introducer needle GPN-177, calibrated guidewire GGW-3870J, 2 x luer-lock injection cap GIC-100, suture ring<sup>◊</sup>, tunnelling trocar<sup>◊</sup>, vessel dilator 13F x 150mm<sup>◊</sup>, split sheath dilator system 16F x 150mm<sup>◊</sup>, wound dressing<sup>◊</sup>

<sup>◊</sup> Not available as GamCath® Accessory.

# Fistula Needles

## General Features & Benefits

- ⊕ Rotating hub with colour-coded marks.
- ⊕ Metallic part of the needle carefully polished and coated using a new siliconization technique.
- ⊕ Oval Back-Eye on the arterial needle.
- ⊕ Specially designed sharp-edged atraumatic facet cut.
- ⊕ Large and ergonomic wing design.



# Standard Needles

## Plume S

### Ordering Information

#### Arterial

Product Name	Product Code	Needle OD (G)	Tube Length (mm)	Needle Length (mm)	Units per box
Plume S A 14 L15 G	100468	14	150	25	50
Plume S A 14 L30 G	101985	14	300	25	50
Plume S A 15 L15 G	101986	15	150	25	50
Plume S A 15 L30 G	101987	15	300	25	50
Plume S A 15 L50 G	100648	15	500	25	50
Plume S A 15 M15 G	101988	15	150	20	50
Plume S A 15 M30 G	101618	15	300	20	50
Plume S A 16 L15 G	101989	16	150	25	50
Plume S A 16 L30 G	101619	16	300	25	50
Plume S A 16 L50 G	107171	16	500	25	50
Plume S A 16 M15 G	101325	16	150	20	50
Plume S A 16 M30 G	101326	16	300	20	50
Plume S A 16 S15 G	103346	16	150	15	50
Plume S A 17 L15 G	101327	17	150	25	50
Plume S A 17 L30 G	101072	17	300	25	50
Plume S A 17 M15 G	101620	17	150	20	50
Plume S A 17 M30 G	101621	17	300	20	50
Plume S A 17 S15 G	103432	17	150	15	50

#### AV-Set

Product Name	Product Code	Needle OD (G)	Tube Length (mm)	Needle Length (mm)	Units per box
Plume S AV 15 L15 G	101263	15	150	25	50
Plume S AV 15 M15 G	107654	15	150	20	50
Plume S AV 15 S15 G	109605	15	150	15	50
Plume S AV 16 L15 G	101990	16	150	25	50
Plume S AV 16 M15 G	101264	16	150	20	50
Plume S AV 16 S15 G	107652	16	150	15	50
Plume S AV 17 M15 G	106230	17	150	20	50

# Fistula Needles

## General Features & Benefits

- ⊕ Rotating hub with colour-coded marks.
- ⊕ Metallic part of the needle carefully polished and coated using a new siliconization technique.
- ⊕ Oval Back-Eye on the arterial needle.
- ⊕ Specially designed sharp-edged atraumatic facet cut.
- ⊕ Large and ergonomic wing design.



# Standard Needles

## Plume S

### Ordering Information

#### Venous

Product Name	Product Code	Needle OD (G)	Tube Length (mm)	Needle Length (mm)	Units per box
Plume S V 14 L15 G	106231	14	150	25	50
Plume S V 14 L30 G	101429	14	300	25	50
Plume S V 15 L15 G	101991	15	150	25	50
Plume S V 15 L30 G	101622	15	300	25	50
Plume S V 15 L50 G	101623	15	500	25	50
Plume S V 15 M15 G	101992	15	150	20	50
Plume S V 15 M30 G	101073	15	300	20	50
Plume S V 15 S15 G	107782	15	150	15	50
Plume S V 16 L15 G	101993	16	150	25	50
Plume S V 16 L30 G	101624	16	300	25	50
Plume S V 16 L50 G	107783	16	500	25	50
Plume S V 16 M15 G	101994	16	150	20	50
Plume S V 16 M30 G	100746	16	300	20	50
Plume S V 16 S15 G	106975	16	150	15	50
Plume S V 17 L15 G	102751	17	150	25	50
Plume S V 17 L30 G	100878	17	300	25	50
Plume S V 17 M15 G	101430	17	150	20	50
Plume S V 17 M30 G	101626	17	300	20	50
Plume S V 17 S15 G	106974	17	150	15	50

#### Single-Needle

Product Name	Product Code	Needle OD (G)	Tube Length (mm)	Needle Length (mm)	Units per box
Plume S Y 15 L10 G	101995	15	100	25	50
Plume S Y 15 M10 G	100968	15	100	20	50
Plume S Y 15 S10 G	106976	15	100	15	50
Plume S Y 16 L10 G	101996	16	100	25	50
Plume S Y 16 M10 G	100399	16	100	20	50
Plume S Y 17 L10 G	100151	17	100	25	50
Plume S Y 17 M10 G	106233	17	100	20	50

# Fistula Needles

## Additional Features & Benefits

In addition to the general Features & Benefits of the Plume S series, the Plume SP series offers:

- ⊕ Easy unlocking system offers automatic protection while removing and disposing the needles and thus protection against needlestick injuries and infections.



# Safety Needles

## Plume SP

### Ordering Information

#### Arterial

Product Name	Product Code	Needle OD (G)	Tube Length (mm)	Needle Length (mm)	Units per box
Plume SP A 15 L15 G	106226	15	150	25	50
Plume SP A 15 L30 G	106227	15	300	25	50
Plume SP A 15 M30 G	109117	15	300	20	50
Plume SP A 16 L15 G	106228	16	150	25	50
Plume SP A 16 L30 G	106229	16	300	25	50
Plume SP A 16 M30 G	109115	16	300	20	50

#### Venous

Product Name	Product Code	Needle OD (G)	Tube Length (mm)	Needle Length (mm)	Units per box
Plume SP V 15 L15 G	106234	15	150	25	50
Plume SP V 15 L30 G	106235	15	300	25	50
Plume SP V 15 M30 G	109118	15	300	20	50
Plume SP V 16 L15 G	106236	16	150	25	50
Plume SP V 16 L30 G	106237	16	300	25	50
Plume SP V 16 M30 G	109116	16	300	20	50

#### AV-Set

Product Name	Product Code	Needle OD (G)	Tube Length (mm)	Needle Length (mm)	Units per box
Plume SP AV 15 M30 G	109752	15	300	20	50
Plume SP AV 16 M15 G	109114	16	150	20	50
Plume SP AV 17 M15 G	109113	17	150	20	50

# Fistula Needles

## Additional Features & Benefits

In addition to the general Features & Benefits of the Plume S and SP series, the Plume SP+ series offers:

- ⊕ Transparent protection sheath for easy identification of the intravascular position after puncture, even in case of a short blood column.
- ⊕ Shorter protection sheath for easy fixation with less movement reduces irritation at the puncture site.
- ⊕ Longer unlocking latch at ergonomic position for easy handling with gloves.



# Safety Needles

## Plume SP+

### Ordering Information

#### Arterial

Product Name	Product Code	Needle OD (G)	Tube Length (mm)	Needle Length (mm)	Units per box
Plume SP+ A 15 M30 G	112655	15	300	20	50
Plume SP+ A 16 M30 G	112656	16	300	20	50

#### Venous

Product Name	Product Code	Needle OD (G)	Tube Length (mm)	Needle Length (mm)	Units per box
Plume SP+ V 15 M30 G	112614	15	300	20	50
Plume SP+ V 16 M30 G	112615	16	300	20	50

#### AV-Set

Product Name	Product Code	Needle OD (G)	Tube Length (mm)	Needle Length (mm)	Units per box
Plume SP+ AV 15 M15 G	112963	15	150	20	50
Plume SP+ AV 16 M15 G	112964	16	150	20	50
Plume SP+ AV 17 M15 G	112965	17	150	20	50

# Fistula Needles

## Features & Benefits

- ⊕ Oval large Back-Eye avoids suctioning to the vessel intima.
- ⊕ Colour-coded bevel index for clear indication of needle position.
- ⊕ Premium luer-lock connector with wing for safe connection to the bloodline system.



# Standard Needles

## Nipro Fistula Needles

### Ordering Information

#### Arterial

Product Name	Product Code	Needle OD (G)	Tube Length (mm)	Needle Length (mm)	Details	Units per box
Nipro F 14 AS G	101238	14	150	25	-	50
Nipro F 14 BS G	100803	14	300	25	-	50
Nipro F 15 AS G	101109	15	150	25	-	50
Nipro F 15 RAS G	106174	15	150	20	-	50
Nipro F 15 BS G	100767	15	300	25	-	50
Nipro F 15 LBS G	100941	15	300	30	-	50
Nipro F 16 AFS G	106177	16	150	25	Fixed Wings	50
Nipro F 16 AS G	101132	16	150	25	-	50
Nipro F 16 MAS G	106180	16	150	15	-	50
Nipro F 16 RAS G	104175	16	150	20	-	50
Nipro F 16 BFS G	102176	16	300	25	Fixed Wings	50
Nipro F 16 BS G	101240	16	300	25	-	50
Nipro F 17 AS G	101293	17	150	25	-	50
Nipro F 17 MAS G	106185	17	150	15	-	50
Nipro F 17 RAS G	106186	17	150	20	-	50
Nipro F 17 BFS G	102179	17	300	25	Fixed Wings	50
Nipro F 17 BS G	100959	17	300	25	-	50

#### Venous

Product Name	Product Code	Needle OD (G)	Tube Length (mm)	Needle Length (mm)	Details	Units per box
Nipro F 14 A G	101499	14	150	25	-	50
Nipro F 15 A G	101374	15	150	25	-	50
Nipro F 15 RA G	106173	15	150	20	-	50
Nipro F 15 B G	100506	15	300	25	-	50
Nipro F 15 BF G	106175	15	300	25	Fixed Wings	50
Nipro F 16 A G	101204	16	150	25	-	50
Nipro F 16 MA G	106178	16	150	15	-	50
Nipro F 16 RA G	106179	16	150	20	-	50
Nipro F 16 B G	101502	16	300	25	-	50
Nipro F 16 BF G	106181	16	300	25	Fixed Wings	50
Nipro F 17 A G	100740	17	150	25	-	50
Nipro F 17 RA G	106184	17	150	20	-	50
Nipro F 17 B G	100870	17	300	25	-	50

# Fistula Needles

## Features & Benefits

- ⊕ Colour-coded wings and packaging clearly indicating the gauge size.
- ⊕ Soft tubing with anti-kinking properties.
- ⊕ Excellent needle quality for smooth treatments.



# Standard Needles

## Nipro Fistula Needles

### Ordering Information

#### Blunt

Product Name	Product Code	Needle OD (G)	Tube Length (mm)	Needle Length (mm)	Units per box
Nipro Blunt F 14 BS G	112803	14	300	25	50
Nipro Blunt F 15 BS G	112804	15	300	25	50
Nipro Blunt F 16 BS G	112805	16	300	25	50
Nipro Blunt F 17 BS G	112806	17	300	25	50
Nipro Blunt F 15 RBS G	109530	15	300	20	50
Nipro Blunt F 16 RBS G	109538	16	300	20	50
Nipro Blunt F 17 RBS G	109537	17	300	20	50

#### Single-Needle

Product Name	Product Code	Needle OD (G)	Tube Length (mm)	Needle Length (mm)	Units per box
Nipro SN F 14 AS G	106190	14	150	25	50
Nipro SN F 15 AS G	100997	15	150	25	50
Nipro SN F 16 AS G	101294	16	150	25	50

#### AV-Set

Product Name	Product Code	Needle OD (G)	Tube Length (mm)	Needle Length (mm)	Units per box
Nipro Set F 16 AS/A G	106203	16	150	25	25
Nipro Set F 16 RAS/A G	106204	16	150	20	25
Nipro Set F 17 RAS/A G	106205	17	150	20	25

# Plaster

## Features & Benefits

### ⊕ **Haemostasis in Extreme Situations**

Among anticoagulation or coagulation dysfunction persuades the precise haemostasis. Bland, constant pressure to the puncture site, fast wound healing.

### ⊕ **Blood Coagulation Support**

Alginate extracted from brown alga transforms when contacting with fluids in a gel, which supports body's own coagulation. Less secondary haemorrhage, rapid recovery.

### ⊕ **Eudermic**

Hypoallergenic wings are skin-sensitive and easy to detach. Even among cortisone therapy and with dry skin applicable.



# TipStop Plaster

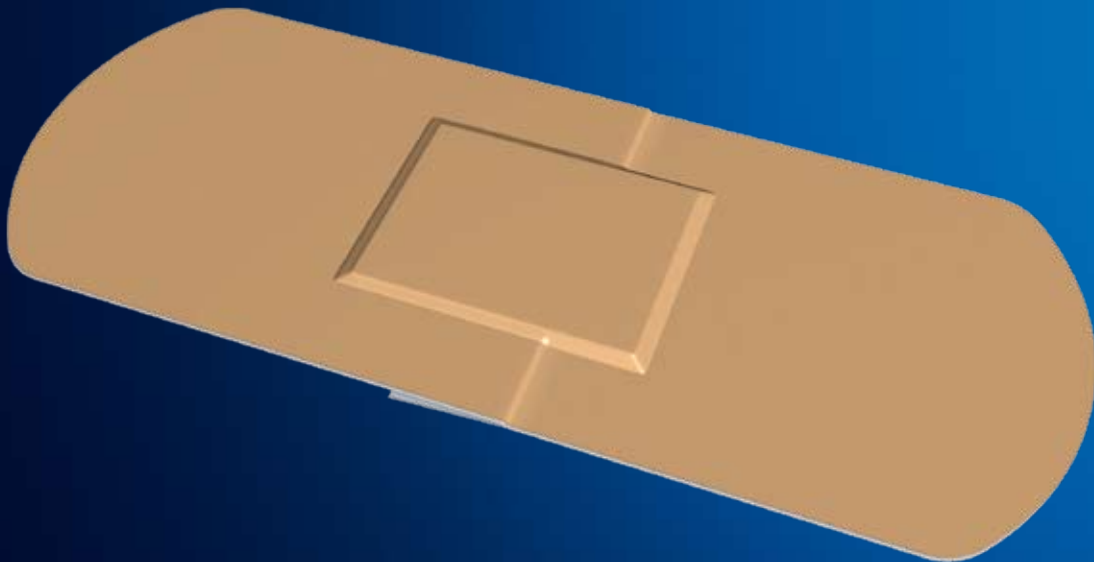
## Ordering Information

<u>TipStop Plaster</u>			
Product Name	Product Code	Dimensions (mm)	Units per box
TipStop Plaster	101997	100 x 28 x 18	96

# Plaster

## Features & Benefits

- ⊕ Easy to apply.
- ⊕ Monitored wound compression ensures maximum safety.
- ⊕ Facile and painless removal.
- ⊕ Skin-friendly adhesive agent reduces skin irritation.
- ⊕ No need for a second dressing.



# Gambro Plaster XL

## Ordering Information

Gambro Plaster XL

Product Name	Product Code	Dimensions (mm)	Units per box
Gambro Plaster XL	101504	30 x 72 (Bandage) 15 x 20 (Sponge)	500

# GamCath® Accessories

## Features & Benefits

- ⊕ Absolute dimensional accuracy
- ⊕ Maximum safety
- ⊕ Easy availability



# Vessel Dilator / Introducer Needle / Calibrated Guidewire / Luer-Lock Injection Cap / Luer-Lock Protection Cap

## Ordering Information

### Accessories

Product Name	Product Code	OD (F/G/")	Length (mm)	Details	Units per box
GVD-815	101796	8	150	Vessel Dilator	15
GVD-1015	101508	10	150	Vessel Dilator	15
GVD-1115	100593	11	150	Vessel Dilator	15
GPN-177	101027	17	70	Introducer Needle	50
GPN-187	100899	18	70	Introducer Needle	50
GGW-3250J	103488	0,032	500	Calibrated Guidewire with „J“-tip	15
GGW-3570J	102943	0,035	700	Calibrated Guidewire with „J“-tip	15
GGW-3870J	101795	0,038	700	Calibrated Guidewire with „J“-tip	15
GIC-100	101507	-	-	Luer-Lock Injection Cap (Synthetic Isoprene)	100
E-10	106806	-	-	Luer-Lock Protection Cap	100

# International Conversion Table

Gauge (G)	Millimeter (mm)	Inch (")
14	2,1	0,083
15	1,8	0,072
16	1,6	0,065
17	1,4	0,058
18	1,2	0,049

French (F)	Millimeter (mm)	Inch (")
6	1,99	0,08
6,5	2,15	0,09
8	2,65	0,11
10	3,31	0,13
11	3,64	0,15
11,5	3,81	0,15
12	3,98	0,16
13	4,31	0,17
14,4	4,77	0,19
15	4,97	0,20
20	6,63	0,27

Inch (")	Millimeter (mm)
0,032	0,81
0,035	0,89
0,038	0,97